



Service provision during the Corona (COVID-19) virus pandemic.

Date issued- 17/4/2020

Dear Valued Client

We, like you, are watching the COVID-19 situation closely and responding accordingly. Our priority is keeping our employees, clients and those in the communities we work in safe.

Our office remains open for business

Our business remains open and fully operational, at this stage.

Most of our staff may be working from home during the next few weeks, but they are contactable by phone, unless ill.

We are providing hand sanitiser in each branch and regularly cleaning high traffic surfaces.

We respectfully ask that you do not to come to our sites if you:

- Have returned from overseas in the last two weeks
 - Have come into contact with persons infected with COVID-19
 - Have symptoms that include dry cough, temperature or difficulties breathing
- Are generally unwell.

We are also available over phone, email and online

We're always happy to discuss your needs and ensure we're supporting you despite the circumstances:

We're always happy to do business with you by [phone](#) or email (this would be the preferred options in most cases)

We're always happy to organise safe pick up protocols (of soil test data, nutrient management plans, seed cane, etc.) if you are unwell or have concerns

We have cancelled all shed meetings, workshops and group activities until further notice.

Staff contact details are as follows:

TITLE	NAME	MOBILE#	EMAIL ADDRESS
Manager	Lawrence Di Bella	0448 084 252	ldbella@hcpsl.com.au
Administration Manager	Sue Beccaris	0488 696 246	admin@hcpsl.com.au
Resource Officer	Sandra Coco	0437 716 345	scoco@hcpsl.com.au
Hot Water Treatment Tanks		0437 017 805	
Macknade Office		4777 7643 4777 7349	
Crop Agronomist	Tony McClintock	0447 304 963	tmclintock@hcpsl.com.au
Crop Agronomist	Samantha Sellick	0417 622 129	ssellick@hcpsl.com.au
Crop Agronomist	Graeme Holzberger	0428 761 808	gholzberger@hcpsl.com.au
Extension Agronomist	Adam Royle	0417 610 446	aroyle@hcpsl.com.au
Extension Agronomist	Richard Hobbs	0400 544 301	rhobbs@hcpsl.com.au
Extension Agronomist	Megan Zahmel	0447 317 102	mzahmel@hcpsl.com.au
Extension Agronomist	Shannon O'Brien	0490 889 383	sobrien@hcpsl.com.au
Extension Agronomist	Jarrod Sartor	0499 034 968	jsartor@hcpsl.com.au
Extension Agronomist	Leanne Carr	0490 077 176	lcarr@hcpsl.com.au
Extension Agronomist	Ellie McVeigh	0491 149 245	emcveigh@hcpsl.com.au
Spatial Systems & Precision Ag Co-ordinator	Mike Sefton	0428 746 079	msefton@hcpsl.com.au
GIS Officer	Rod Nielson		rnielson@hcpsl.com.au
Field technician (casual)	Minka Ibanez	0438 654 312	mibanez@hcpsl.com.au
Admin Support Officer (Projects)	Melissa Royle	0439 697 080	mroyle@hcpsl.com.au

HERBERT CANE PRODUCTIVITY SERVICES LTD
PH 47761808 FAX 47761811

Getting services undertaken in field (like clean seed, pest and disease inspections, machinery calibrations, etc.)

Please ring your HCPSL Extension and Crop Agronomists director or ring the office if you need one of our staff to come in field.

To avoid face to face contact (where possible) HCPSL staff will ask you what farm number and block number needs inspection and what type of inspection is required when you call. Please have these details readily available before you ring in. We will contact you with the results soon after.

Details concerning collection of Clean Seed from the plots, seed inspections and access to the hot water treatment tanks will be covered later in this newsletter.

We will continue to assess the situation and adapt our response

- With safety in the forefront of our minds and actions, we will continue to respond to COVID-19 in line with Government guidance
- At this time, our service staff, particularly Extension and Crop Agronomists, will be supporting clients as usual, but with extra caution including practicing social distancing.

We will keep you informed of any changes to the above approach and encourage you contact your local HCPSL representative if you have any concerns.

Your HCPSL Team





Grower Board member election results

Dear HCPSL members,

The following three Herbert growers have been elected to the HCPSL Board:

Greg Erkilli- 230 votes

Gino Zatta- 217 votes

Michael Waring- 216 votes

I urge growers to contact the three elected HCPSL Grower Board members as your official delegates on the HCPSL Board.

Steve Guazzo received 216 votes also. The vote count was undertaken by 3 separate scrutinize groups from both within and outside of the district, due to the close count.

The HCPSL constitution does not have any provision to deal with growers receiving equal numbers of votes during an election ballot. Because the “dead lock” in the vote for the third grower position on the Board, it was decided by the election scrutineers that the fairest option would be to have a re-election for the third grower position. Before the re-election was called both Michael Waring and Steve Guazzo were asked if they both wished to nominate for the re-election. At this point Steve Guazzo decided to withdraw his nomination.

I would sincerely like to thank Steve Guazzo for nominating for the initial election. Sincere thanks to Vince Russo and Michael Reinaudo, who did not seek re-election, for serving on the HCPSL Board. Your assistance and contribution have been greatly appreciated over the years.

The new HCPSL Board and its staff look forward to servicing the Herbert cane industry going forward.

Yours sincerely,

Lawrence Di Bella
HCPSL Manager.

HCPSL Clean Seed plots and their operation.

If you have not ordered your Clean Seed for 2020, it is not too late.

Growers will be required to send back their order forms for Clean seed to HCPSL before April 24th, after which growers will be notified of their allocation volumes and location of collection.

The operation of the plots in 2020 will run a little different to 2019 because of COVID-19.

Below are the steps required when ordering and collecting cane from the Clean Seed plots:

- As a result of the social distancing practices enforced, a couple of changes have been made to allow us to provide cane from the HCPSL Clean Seed plots. Included with the confirmation letters will be paperwork usually signed at the plot (these forms allow Wilmar to deduct the purchase of cane from the cane payment system). These will need to be signed and sent back to the HCPSL in the Reply-Paid envelopes enclosed to ensure social distancing is practiced at the plot. For multiple farm numbers, please circle the desired farm number to be charged. On the day of collection records will be modified (if required) to reflect the quantity of cane collected. This final record of correct volumes and costs will be sent to the mill, so financial deductions can be made.
- Growers will need to contact the allocated staff member to organise collection of the cane a few days prior to the collection of cane.
- Growers collecting whole stalk cane can drop their trailers in advance at a designated point at the plot, and growers return later to pick up the cane. Trailers being dropped off to be filled will need to be labelled with: Grower Name, Farm number, Variety and the amount of cane required in the trailer.
- Due to social distancing and HCPSL WPHS requirements, only HCPSL staff will be utilised to fill trailers with clean cane from HCPSL plots.
- Cane collected as billets will require the harvester and haulout drivers to remain in their cabs and correspond via the UHF or mobile, where possible. If there is a need to chat face to face social distancing will need to be practiced.

Once allocations have been completed, growers will receive the confirmation letters with the designated staff. If you have any questions, please contact those staff directly.

We would like to thank everyone for there cooperation and assistance concerning the operation of the Clean Seed plots, especially due to ensuring the safety of all concerning COVID-19.

Seed Inspections Procedures

In order to maintain the social distancing currently in force, growers have 3 options for having their seed cane inspected in 2020. We ask that growers observe the social distancing requirements when interacting with all HCPSL staff.

Option 1 – Sample drop off.

Growers can elect to drop off samples for seed inspections at 1 of the 2 drop off locations (Abergowrie Nutrien Ag Depot and HCPSL / SRA building). 4 stalk bundles can be left in the trailers on site for HCPSL staff to pick up and process for analysis. Bundles need to be secured and labelled. Instructions, labels and cable ties will be available at each site to secure and label the samples.

Growers need to contact the staff directly on their mobiles before collecting the samples to ensure the staff can process the samples before they dry out (contact details are below). This system will commence on the 27th of April.

Option 2 – Sampling via maps.

Growers can elect to contact staff and provide details of the Farm Number, Block Number and Variety, so staff can access the blocks themselves. Contact can be made via mobile phone or email.

Option 3 – Sampling via social distancing.

If growers wish to be present when HCPSL staff are on the farm, social distancing protocol will need to be followed. Growers will need to travel in their own vehicle, and maintain the 1.5 m spacing between themselves and staff.

Staff contactable for inspections are :

Tony McClintock (0447 304 963)

Sam Sellick (0417 622 129 ssellick@hcpsl.com.au)

Graeme Holzberger (0428 76 1808 or gholzberger@hcpsl.com.au)



FALL ARMYWORM

Fall Armyworm (*Spodoptera frugiperda*) is an exotic pest that has been detected in the Wet Tropics, Burdekin and as far south as Bundaberg. Fall Armyworm is reported to feed on more than 350 plant species, including maize, rice, sorghum, sugarcane and fruit and vegetable crops.

Identification can be very difficult given similarities with other species. Sampling of suspect larvae has been carried out in the Herbert and molecular testing of larvae has resulted in a negative result for Fall Armyworm to date. The damage seen in cane around the district has more likely been the result of False Armyworm.

To date, the crops that appear to be most affected by the Fall Armyworm have been Maize and Sorghum. So far, it has not been at levels that require control.



Image 1: False Armyworm

Moth

The Fall Armyworm moth has a wing span of 32 – 40mm, has a brown or grey forewing and a white hindwing. The male has more patterns and a distinctive white spot on each forewing.



Image 2: Fall Armyworm moth



Image 3: Fall Armyworm larvae emerging from eggs

Larvae

Newly hatched larvae are about 1.7mm long and are pale green to brown with a larger dark brown head.

As they develop, they become a darker, greyish brown with white lengthwise stripes and darker spots with spines on their upper surface and a pale underside. As you can see below there can be a lot of variation in colour.

FAW: mature larvae – length 30-36 mm



Mature fall armyworms (30-36 mm). © Visser ARC-VOP Rooideplaat

FAW: mature larvae – length 30-36 mm

Side view



Mature fall armyworms (30-36 mm). D Visser ARC-VOP Rooideplant

Older larvae have a distinctive pattern of 4 spots on the second to last body segment and an inverted “Y” shape on their heads. Another defining identification mark of the Fall Armyworm is a small, ring like marking at the front and back but these are so small, you will need to use magnification to see it.



Image 4: Inverted “Y” on head and small ring (circled).

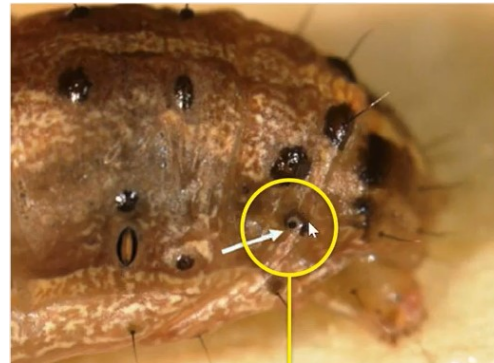


Image 5: Pattern of 4 dots and small hind ring (circled)

Eggs

The eggs of the Fall Armyworm are pale yellow and clustered together in a mass. An egg mass can contain 100 – 200 eggs. They are usually attached to foliage in a mound with a silk like furry substance.



Image 6: Egg mass on leaf.

Plant Damage

The larvae will feed on leaves, creating pinholes and windows in the leaf tissue, and giving leaf margins a tattered appearance.

Image 7: Early leaf damage cause by Fall Armyworm



Image 8: Larvae and Frass present in leaf whorl (photo: Angus Dalglish & Brent Wilson)

In grass like plants (Maize, Sorghum and Sugarcane), they often feed within the leaf whorl. Insect frass is a sign that the larvae are present.

It is important to note that many Lepidoptera species can cause the same damage as Fall Armyworm.

Monitoring & Action

At this point in time, monitoring your crops for Fall Armyworm is the best course of action.

You should be examining plants for:

- leaf damage, including pinholes, windowing, tattered leaf margins and defoliation of plants
- tiny larvae, less than 1mm, that are more active at night, eating pinholes and transparent windows in leaves
- bigger larvae grazing on leaves and stems, leaving behind insect frass (droppings)
- in monocots, larvae are often in plant whorls (where leaves radiate from or wrap around the stem or stalk)

regular crop monitoring is essential to avoid undetected crops damage.

If you find a suspect insect, collect the sample and photograph it so this can be sent for proper identification. Samples can be sent to either HCPSL or DAF for identification. If the larvae is suspected, the sample can then be sent away for further genetic testing.

While monitoring your crops, keep a look out for beneficial insects that feed on larvae. Beneficial insects can help to keep populations in check and reduce the need for spraying.

Chemical Control Options

Growers have asked if Imidacloprid can be used to control Fall Armyworm in plant cane.

Imidacloprid is not registered for use against Fall Armyworm and will not have any activity on Fall Armyworm in plant cane and it is strongly advised not to use it for this purpose.

Chemical control options for Fall Armyworm are limited in Sugarcane.

A permit has been issued for 500g/L Permethrin to control Fall Armyworm in sugarcane, prior to the 3rd instar before the larvae move into the leaf whorl and become entrenched. Applications after this will be ineffective in controlling the larvae and could lead to resistance developing in the population.

It is important that you seek agronomic advice prior to spraying from HCPSL or your advisor.

For further information on the Fall Armyworm visit the Department of Agriculture website <https://www.business.qld.gov.au/industries/farms-fishing-forestry/agriculture/crop-growing/fall-armyworm>

There are some very useful webinars at this site that are worth watching if you would like more information.

Fallow Management - it is time to clean up blocks.

With the wet season coming to an end, it is time to consider when and how to terminate your fallow legume or grassy fallow blocks. There are several management issues to consider.

- ♦ Consider the soil moisture in your fallow blocks as legumes have a demand on soil available water and will lower your available moisture, resulting in dryer soil profile. In light soil types like sandy and loamy blocks your soil moisture profile will be the determining factor and termination should be considered sooner rather than later as the chance of significant rain fall is diminishing. In heavier soil types your soil moisture will possibly be higher and there for termination should be considered when you can successfully travel on your block.
- ♦ There are 2 different ways to terminate your fallow legume grassy fallow block.
 - ♦ Termination by spraying out. The herbicide used would be Glyphosate (Wipe-Out 450 etc) based products at **4-5 L/ha** to control your volunteer cane, grasses, sedges and legumes. The addition of Fluroxypyr (Starane® Advanced etc) at **0.8 L/ha** is recommended as these 2 products are compatible and will aid in terminating your fallow crop. You may also add 2,4-D at **0.7 L/ha** to the mix however it ***must be compatible with Glyphosate***. Refer to Glyphosate label, **2,4-D Advance 700** is compatible with the above 2 products. The addition of a wetting agent is recommended and LI 700 at 250-500 mls/100 l will give the best results. Do not use spray oils with Glyphosate products or mixes as they are not compatible.
 - ♦ Alternatively, mechanical cultivation like discing, slashing/mulching and rotary hoeing can be used to terminate and incorporate crop residue.
- ♦ Be mindful that mechanical incorporation may cause legume nitrogen losses as bacteria require nitrogen to break down the residue from the legumes/grassy fallow.
- ♦ Incorporated legume crops and grassy fallows may also attract Symphyla as they help in the residue break down process. Symphyla can cause germination and growth problems in young plant cane. To control Symphyla, at planting apply Lorsban @ 2.0 L/ha or Pyrinex Super @ 1.88 L/ha.
- ♦ A good crop of legumes can supply additional nitrogen. When side dressing plant cane consider reducing nitrogen rates following a legume crop.

**For additional advice and information contact HCPSL extension team or
Richard Hobbs 0400 544 301**

Disclaimer: Except as required by law and only to the extent so required, none of HCPSL, its directors, officers or agents makes any representation or warranty, express or implied, as to, or shall in any way be liable (including liability in negligence) directly or indirectly for any loss, damages, costs, expenses or reliance arising out of or in connection with, the accuracy, currency, completeness or balance of (or otherwise), or any errors in or omissions from, any test results, recommendations statements or other information provided to you

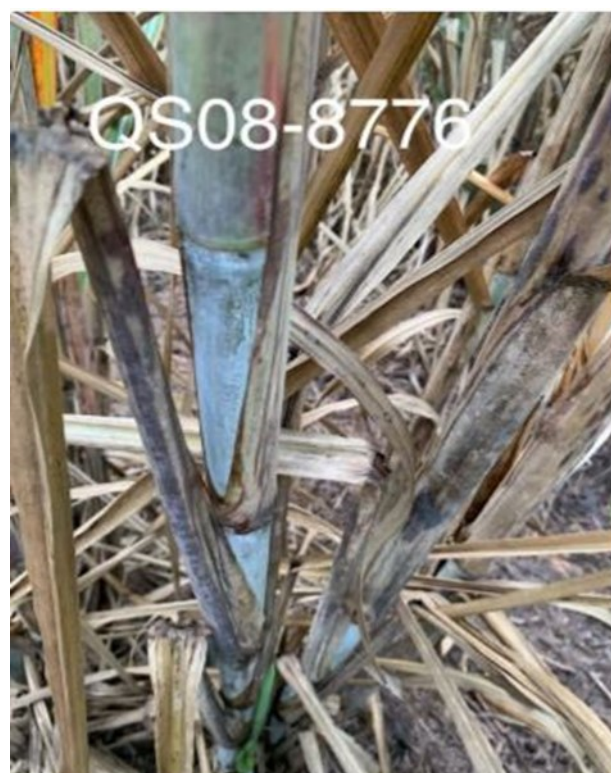
New Varieties to be released in 2021

The RVC (Regional Variety Committee) meeting was held on Thursday 2nd of April. It was at this meeting information from 5 Maximum Propagated clones were reviewed & voted upon. The outcome of this process will see 2 new varieties added to the Herbert Approved Planting List. These varieties will be available from the HCPSL clean seed plots in 2021. A brief overview of the varieties listed below.

Variety	SRA26
Clone	QN08-2282
Parentage	QN97-2122 x Q146
TCH	approx. 1.3 lower compared to standards.
CCS	approx. 0.5 higher compared to standards
CCS	Mid – Late
Disease Rating	Smut - Resistant Pachymetra - Resistant Leaf Scald - Resistant
Growth Habit	Throughout trials this variety was observed to be free of arrows & appeared to remain standing throughout trials even when standards became lodged.



Variety	SRA?? -to be announced soon.
Clone	QS08-8776
Parentage	Q233x Q135
TCH	Similar compared to standards. (Approx .1 lower)
CCS	approx. 0.7 higher compared to standards
Disease Rating	Smut—Resistant Pachymetra - Resistant/Intermediate Leaf Scald- Resistant
Growth Habit	This clone has been observed to have similar germination traits as Q208. Sparse arrowing has been observed through trial plots.





Variety recommendations over the internet

HCPSL is offering growers the opportunity to join group chats to talk about varieties for planting over the internet. What you need to do to get involved:

1. You will need a computer with a web camera and microphone.
2. Register with Lawrence Di Bella by email to ldibella@hcpsl.com.au
3. Nominate the session you would like to join from the list below:
 - a) Discussion on the new varieties—Tuesday 28th of April @ 1.00 pm
 - b) Managing Pachymetra root rot with varieties—Wednesday 29th April @ 11.30 am
 - c) Getting clean cane from HCPSL in 2020—Thursday 30th of April @ 1.00 pm
4. Once you have registered you will be sent a **Zoom** notice from either Lawrence Di Bella or Sam Sellick on how to join the group chat on varieties.

We will hold groups to 10 people at a time to allow for group discussions. If demand is high for this service, we will offer more sessions. HCPSL technical staff will attempt to answer your variety questions or seek out information for you through these group chats.

LET'S TALK ABOUT VARIETIES!!



Nutrient Management Planning Update

Notice to growers working with HCPSL WTSIP, Herbert RP161 and Catalyst staff to develop nutrient management plans in 2020.

Our team of staff have been working to ensure we fulfil our commitment in providing growers with nutrient management plans during the COVID-19 outbreak.

Due to recent social distancing laws, staff will be working from home until further notice. While staff will continue to engage with growers and develop nutrient management plans, growers should be aware that it may not be possible to meet original timeframes for completing all of the nutrient management plans. The way our staff engage with growers may also be different from what has previously been accepted, once again this is primarily due to the evolving COVID-19 situation and social distancing laws.

Please be assured that HCPSL and our staff are still committed to delivering the best service possible. If a grower has any concerns or questions, please contact your extension agronomist to have a chat about how they might be able to best provide for your particular needs.

WTSIP Team

Leanne Carr – 0409077176

Jarrold Sartor – 0499034968

Herbert RP161 Team

Adam Royle - 0417610446

Shannon O'Brien – 0409889383

Ellie McVeigh – 0491149245

Project Catalyst & WTSIP Team

Megan Zahmel - 0447317102

2019 Herbert Industry Award Recipients

Due to Covid-19 and the cancellation of the Herbert Walk & Talk we were unable to present the 2019 Herbert Industry Awards. The award recipients were:

Award	Recipient
Grower of the Year (Sponsored by Wilmar)	Pace Farming
Young Grower of the Year (Sponsored by Wilmar)	Chris Butler
Mangrove Jack Award (Sponsored by Herbert River Catchment Group)	Herbert Water Quality Monitoring Program
Harvesting Efficiency Award (Sponsored by Sugar Research Australia)	Roveda Harvesting
Innovation Award (Sponsored by Rabobank)	Carta Engineering
Farm Presentation for Harvesting Award (Sponsored by CAMECO)	Roblea Investments P/L
Improved Farm Layout Award (Sponsored by Canegrowers Herbert River)	Rodney Robino
Consistent High Productivity (Sponsored by QSL)	Celotto A & A Family Trust ASM Earthmoving Co Zatta G & AJ Boscato RO & JA Finlayson JT & Mrs VR Russo Farming Pty Ltd
R&D On-farm Co-operation (Sponsored by HCPSL)	Motti Enzo Discretionary Trust Morellini P Rivellini A & S Accornero Family Trust T/A Accornero Farming Co
Lifetime Achievement Award (Sponsored by HCPSL)	Robert Quabba Joe Girgenti Orazio Marino Frank White

Congratulations to all award recipients. We hope to present your awards face to face in the not to distant future.

Herbert GPS Base Station Frequencies

Name	Base / Repeater	Location	CH.	FREQ. MHZ
J Irvin	B	Warrens Hill	0	465.2750
V Russo	R	Trebonne	0	465.2750
A Pace	B	Mutarnee	3	466.7500
R Pace	R	Bambaroo	3	466.7500
R & G Zatta	B	Mt Abswold	2	462.8000
V Castellani	B	Abergowrie	4	464.9000
W & J Russo	R1	Herbert Vale	4	464.9000
C Carey	R2	Dalrymple	4	464.9000
G Accornero	B	Foresthome	5	463.0750
Water Tower	R	Halifax	5	463.0750
C Guy	B	Bogottos Hill	6	463.6750
B Lyons	R1	Top Stone	6	463.6750
S Patane	R2	Lannercost	6	463.6750
N Reid	B	Pinnacle Hill	8	464.8500
M Pappin	R	Pappins Rd	8	464.8500

