

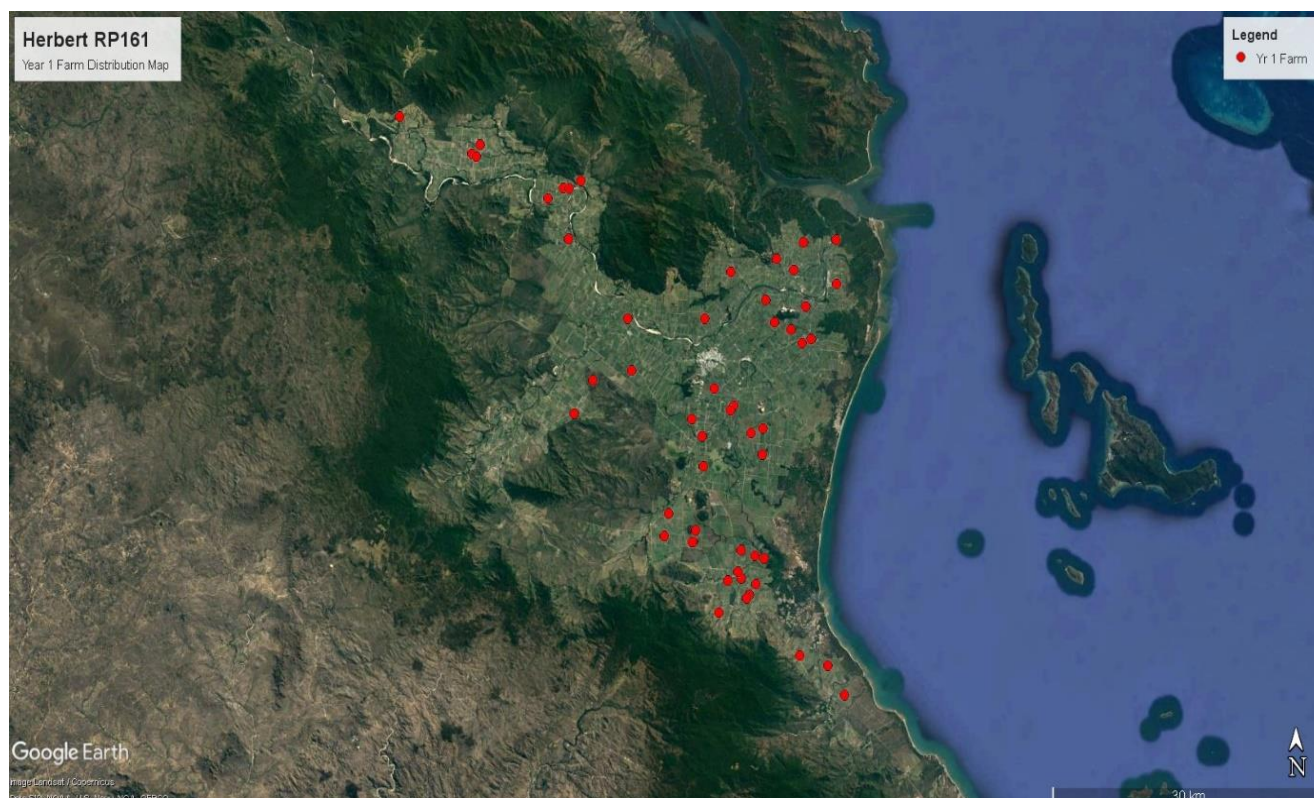
## RP210 – Tailored nutrient and farm management solutions for the Herbert catchment area (Herbert RP161)

### Milestone Report #3

Milestones	Outputs and other deliverables that make up this milestone	Milestone Key Performance Indicators <a href="#">See Supporting Information Part G</a>	Submission date for outputs and deliverables	OGBR review of milestone (date)
<b>Milestone 3</b>  Engage and contract Year 1 grower intake for initial 50 farms.	Grower contracts	Growers - 50 farms contracted	30 June 2019	31 July 2019

#### Engage and contract Year 1 grower intake for initial 50 farms.

- From an initial list of 58 eligible farms, 53 farms have now been benchmarked for participation in year 1
- Grower commitment agreements, along with the \$500 commitment payment, were issued to all year 1 growers on the 1<sup>st</sup> July 2019.
- As at 26<sup>th</sup> July, 41 of the 53 farms have finalised their agreements.



*District map of the Herbert showing the distribution of the 53 year 1 growers participating in Herbert RP161 project.*

## General Activity Updates

### Support Material

- Designs for USB cards and calibration stickers have been finalised thanks to Tayla Rachow from D.E.S.
- HCPSL has ordered enough support material for year 1 growers and potentially the bulk of the material required for year 2 growers (pending final numbers)



Date	Product	Target Rate	Driving Cog	Driven Cog

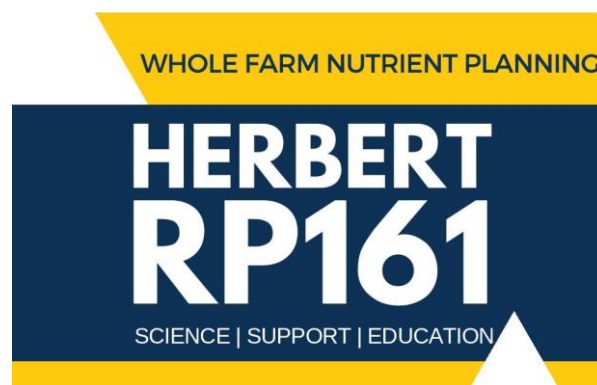


**HCPSL**

Herbert Coast Productivity Services Ltd.

For assistance, call:  
4776 1808

Conversion Factors  
 $\text{Bags/ac} \times 123.5 = \text{kg/ha}$   
 $\text{Kg/ha} \div 123.5 = \text{bags/ac}$



### INCLUDED ON THIS USB:

- All soil sample data spatially allocated
- EC mapping data (if available)
- Spatially mapped whole farm nutrient plan
- Fertiliser box calibration information



**HCPSL**

Herbert Coast Productivity Services Ltd.



Queensland Government



Australian Government



**REEF TRUST**



**FARMACIST**

### On-farm Visits

- Excluding benchmarking activities and contact, 36 extension based 1-on-1 grower visits were conducted up to 30<sup>th</sup> June 2019
- Farm visits included soil testing, general nutrient advice, pest and disease advice, fertiliser and spray equipment set-up, pest and disease advice, and other general agronomic advice.
- Apart from 1-on-1 crop and nutrient advice provided during farm visits, 29 farms also received crop and/or nutrient management advice via phone calls (excluding general project enquiries and non-project growers)
- During on-farm visits and discussions with growers the impacts to the continued wet weather were evident, including the lack of soil tests conducted by growers prior to engagement through Herbert RP161 project.



*A modified soil auger used to collect soil samples for the Herbert RP161 project. Special thanks to Farmacist Burdekin for the concept*



## Team Meetings

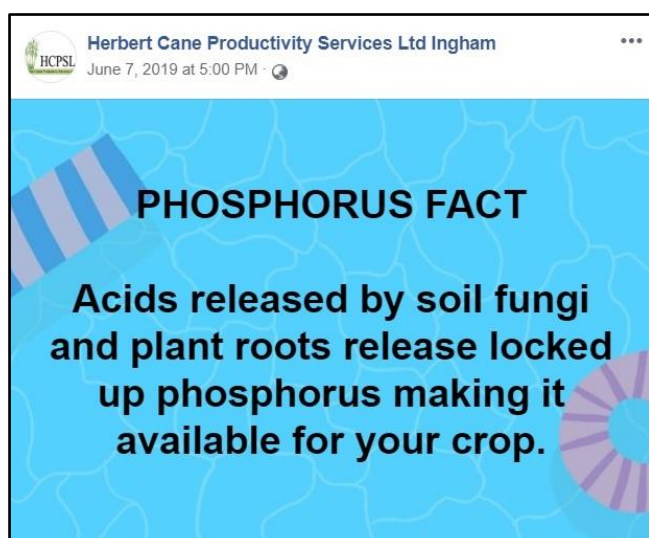
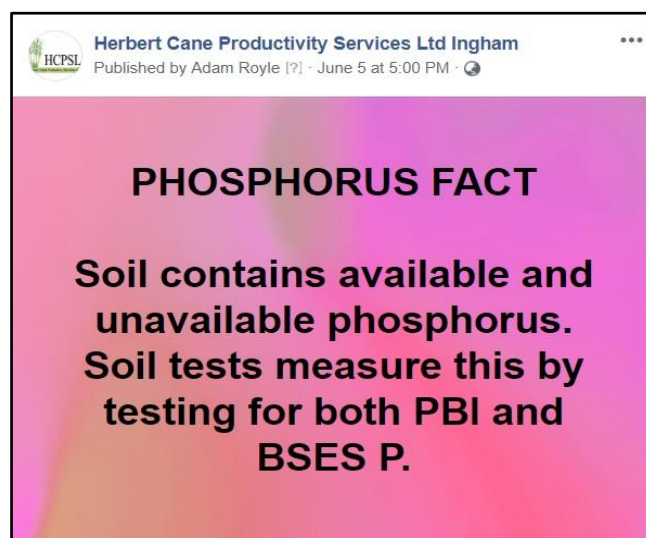
- The HCPSL Soil & Water staff, including Herbert RP161 team members, meet on a weekly basis
- Weekly team meetings have 3 primary goals;
  - Update peers and managers on the progress of individual and project workplans
  - Identify current and perceived workplan or staffing issues (with a view to actioning solutions)
  - Assist with forward planning of activities
- Herbert RP161 staff continue to meet on a regular basis outside of the Soil & Water team meetings
- Herbert RP161 staff met with Dr Andrew Wood (Tanglewood Services) on 3<sup>rd</sup> July 2019 to develop framework for the Farming 4 CASH™ workshops. Both parties will now work together to develop activities based on the agreed framework.

## Social Media

- Currently the HCPSL Facebook page has 570 followers and is beneficial in engaging with multiple family members of a farming enterprise, rather than just the primary decision maker. By engaging this way, HCPSL hopes to facilitate discussion within the farming family unit
- A series of nitrogen and phosphorus facts were posted to HCPSL Facebook page to highlight the importance of soil tests and get growers thinking about N & P in a more wholistic way (see images below)
- The use of social media by project staff has to date been generic in nature and aimed at a wider audience, outside of just project engaged growers
- The soil testing and N & P Facts posts have reached a combine 2362 people and engaged with 229 of those



*Shannon O'Brien (HCPSL / Herbert RP161) with soil sampling equipment that HCPSL has made available to growers*

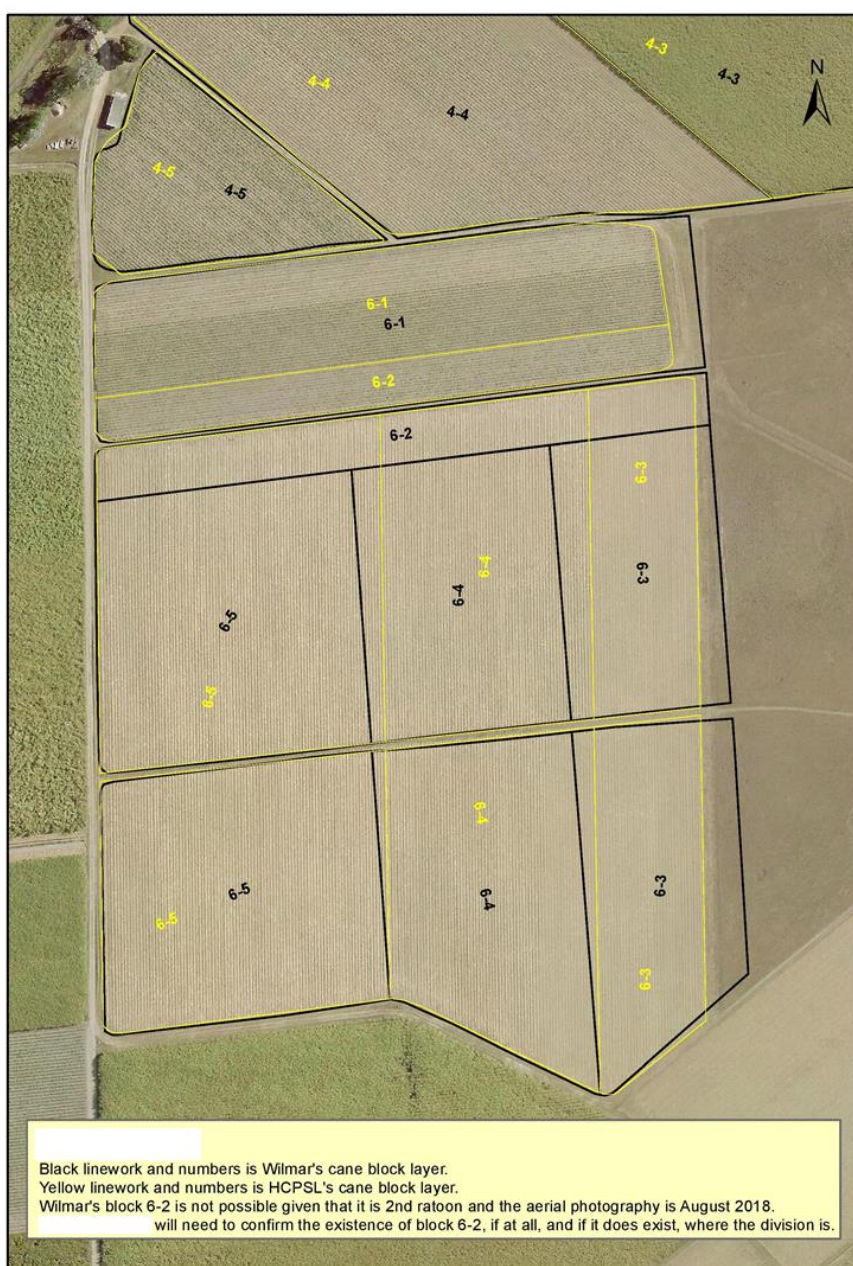


*A series of nitrogen and phosphorus facts that were posted to the HCPSL Facebook page.*



## General Learnings & Observations

- Herbert RP161 staff meet on a regular basis (multiple times per week) to discuss progress and fine-tuning of project deliverables. Staff also met weekly with HCPSL/WTSIP staff to discuss the application of nutrient management planning in relation to regulation requirements
- Two major challenges since commencing the project have been the timeframe for delivery of nutrient & crop plans and access to farms, due to wet weather, that have not taken soil samples in fallow blocks
- Nutrient & crop plans for those who have up to date soil test results are progressing well, however the continued wet weather has delayed soil sampling with several farms still to be sampled
- Working alongside growers to collect soil samples has provided those growers with better understanding of how, why and when to soil test and these learnings will no doubt be utilised outside of this project
- 1-on-1 interactions have also facilitated discussion on a number of other areas such as general nutrient and crop management and pest and disease management
- Access to accurate and up to date farm mapping layers continues to be an ongoing issue with a large proportion of project staffing resources being allocated to ensure accuracy and relevance of project outputs



*An example of one of the issues HCPSL GIS and Herbert RP161 staff face in developing an accurate mapping layer for nutrient and crop planning*